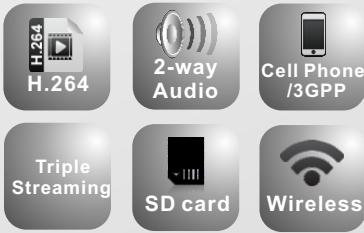
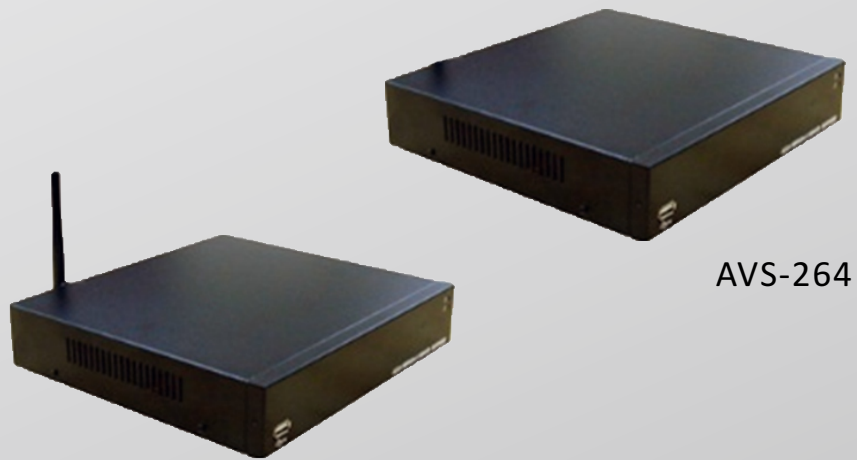


H.264 4 CH Video Server



Features

- H.264/JPEG/MPEG4 compression
- 4CH Input
- De-interlace function
- Triple Streaming
- SD card backup
- 2-way audio supported
- Support iPhone, Android, Blackberry, and Symbian
- Free bundle 36ch recording software



AVS-264W

AVS-264

Model	AVS-264	AVS-264W
Video Compression	H.264/JPEG/MPEG4	
Video Resolution	Full D1: 720x480 (NTSC)/ 720x576 (PAL), CIF, QCIF	
Max. Frame Rate	100FPS (NTSC) / 90FPS (PAL)	
Video Bitrates Adjust	CBR / VBR	
Video Input/Output	Video in x 4, Looping x 4	
Video Adjustment	Image setting, Video Streaming setting	
Audio Communication	2-way audio	
Audio Input/Output	4 in / 1 out	
Alarm Input/Output	4 in / 4 Relay out (COM. & N.O & N.C.), Relay Out: DC24V@1A / AC110V@0.5A	
Triggered Action	Mail, FTP, Relay, Samba, Save to SD card	
Pre/Post Alarm	Pre (0, 1, 2, 3, 4, 5), Post (0, 1, 2, 3, 4, 5, 10) seconds	
Security	Password Protection	
Firmware Update	Update via HTTP	
Multi-Remote Client	10 clients Simultaneous Connections	
Network Protocol	HTTP, TCP/IP, UDP, SMTP, FTP, PPPoE, DHCP, DDNS, NTP, UPnP, 3GPP, SAMBA	
Network Interface	Ethernet (10Base-T / 100Base-Tx)	802.11b/g/n
Video Interface	BNC	
Storage Capacity	SD Card	
External Port	RS232 / RS485	
SD card management		
Recording Trigger	Motion Detection, IP Check, Schedule, Relay, Network Breakdown (wire only)	
Video Format	AVI, JPEG	
Power Voltage Input	DC12V +/- 10%	
Power Consumption	DC12V: LAN 7.6W, WLAN 8.6W	
Client PC Requirement	Win 2000, XP, 2003, Microsoft IE 6.0 or above	
Hardware Requirement	Intel Dual Core 1.66G, RAM: 1024MB, Graphic card: 128MB	
Min. Requirement	Intel-C 2.8G, RAM: 512MB, Graphic card: 64MB	
Operating Temperature	-10°C ~ 40°C	
Dimension	218mm(W)x44mm(H)x202mm(L)	
Weight	1400g	